

DISINFECTING EQUIPMENT

ACCELERATED[®] HYDROGEN PEROXIDE APPROVED
Patented



RESCUE[®]
DISINFECTANTS

Disinfecting Equipment for Clinics and Shelters

Our line of disinfecting equipment has the perfect solution to keep your facility clean and safe for clients and employees.

This line of equipment is approved for use with Accelerated Hydrogen Peroxide® disinfectants such as Rescue™ Concentrate Disinfectant.

Each piece of equipment, when properly calibrated, allows for accurate dilution of chemical concentrate to the desired ratio.



MODEL 250 COMPACT AIRLESS FOAMER



4-Hole Rinse Nozzle

PRODUCT	CLIPPER #
Model 250 Compact Airless Foamer Kit - Blue Lid	VC-1010
Model 250 Compact Airless Foamer Kit - Red Lid	VC-1015
Model 250 Compact Airless Foamer - Standard - Blue Lid	969930-B32



NOTE: Water pressure varies widely. Test strips are **highly recommended** to set up and to periodically confirm desired dilutions.

Overview

A unique medium volume heavy duty hose-end foam applicator for diluting and applying foaming chemicals to any surface. It features ball valve activation and a powerful quick connect 4-hole rinse nozzle. This unit uses city water pressure to draw chemical concentrate from the attached bottle and blend it into the water stream.

Key Features

- Heavy-duty stainless steel ball valve is durable and easy to operate
- Attaches to standard garden hose or 1/2" water connections
- Creates rich, wet foam which increases chemical contact time and effectiveness
- Foam provides visual verification that all areas are covered
- Projects foam up to 12' (depending on water pressure)
- Durable! Machined in the USA, not molded
- Light, 32 oz HDPE bottle reduces wrist and arm fatigue and the risk of repetitive strain injuries
- Great performance with pressure as low as 20 PSI
- Impact resistant lid stands up to substantial abuse

Standard Foamer Includes:

- Machined polypropylene foamer body
- 32 oz wide-mouth, HDPE bottle
- Heavy-duty bottle lid
- 20 color-coded metering tips
- Stainless steel ball valve
- Stainless steel 4-hole rinse nozzle

Foamer Kit Includes:

- All standard foamer items
- Spreader nozzle
- Storage rack
- Precise AHP425 Test strips

Requirements

Chemical Concentrate

Dilution Ratio Range – 286:1 to 6:1 @ 40 PSI

Water – Temperature – up to 160°F

Pressure – 20 - 100 PSI

Flow – 1.25 GPM @ 40 PSI

Supply Line – 1/2"

Foamer Accessories:

See page 6 for more information.

- 32 oz wide-mouth, HDPE bottle
- Quick connect adapter SS
- Garden hose gun with inlet screen/filter
- Metering Tips
- Precise test strips

**MODEL 25
COMPACT AIRLESS FOAMER**



PRODUCT	CLIPPER #
Model 25 Compact Airless Foamer Kit - Blue Lid	VC-1000
Model 25 Compact Airless Foamer Kit - Red Lid	VC-1005
Model 25 Compact Airless Foamer - Standard - Blue Lid	969925-B32
Model 25 Compact Airless Foamer - Standard - Red Lid	VC-1004

Foamer Accessories:

- See page 6 for more information.
- 32 oz wide-mouth, HDPE bottle
 - Quick connect adapter SS
 - Garden hose gun with inlet screen/filter
 - Metering Tips
 - Precise test strips

Overview

A unique medium volume hose-end foam applicator for diluting and applying foaming chemicals to any surface. This unit uses city water pressure to draw chemical concentrate from the attached bottle and blend it into the water stream.

Key Features

- Attaches to standard garden hose or 1/2" water connections
- Creates rich, wet foam which increases chemical contact time and effectiveness
- Foam provides visual verification that all areas are covered
- Projects foam up to 12' (depending on water pressure)
- Durable! Machined in the USA, not molded
- The stainless steel quick connect adapter features a 6-ball socket for secure assembly
- Light, 32 oz HDPE bottle reduces wrist and arm fatigue and the risk of repetitive strain injuries
- Great performance with pressure as low as 20 PSI
- Impact resistant lid stands up to substantial abuse

Standard Foamer Includes:

- Machined polypropylene foamer body
- Quick connect adapter SS
- 32 oz wide-mouth, HDPE bottle
- Heavy-duty bottle lid
- 20 color-coded metering tips
- Garden hose gun with inlet screen/filter

Foamer Kit Includes:

- All standard foamer items
- Spreader nozzle
- Storage rack
- Precise test strips

Requirements

Chemical Concentrate

Dilution Ratio Range – 286:1 to 6:1 @ 40 PSI

Water – Temperature – up to 160°F

Pressure – 20 - 100 PSI
Flow – 1.25 GPM @ 40 PSI
Supply Line – 1/2"

MODEL 15 COMPACT AIRLESS FOAMER



PRODUCT	CLIPPER #
Model 15 Compact Airless Foamer	969920-B32

Foamer Accessories:

- See page 6 for more information.
- 32 oz wide-mouth, HDPE bottle
 - Quick connect adapter SS
 - Garden hose gun with inlet screen/filter
 - Metering Tips
 - Precise test strips

Overview

A unique **low volume** hose-end foam applicator for diluting and applying foaming chemicals to any surface. This unit uses standard city water pressure to draw chemical concentrate from the attached bottle and blend it into the water stream.

Key Features

- Attaches to standard garden hose or 1/2" water connections
- Creates rich, wet foam which increases chemical contact time and effectiveness
- Foam provides visual verification that all areas are covered
- Projects foam up to 7' (depending on water pressure)
- Durable! Machined in the USA, not molded
- The stainless steel quick connect adapter features a 6-ball socket for secure assembly
- Light, 32 oz HDPE bottle reduces wrist and arm fatigue and the risk of repetitive strain injuries
- Great performance with pressure as low as 20 PSI
- Impact resistant lid stands up to substantial abuse

Includes:

- Machined polypropylene foamer body
- Quick connect adapter SS
- 32 oz wide-mouth, HDPE bottle
- Heavy-duty bottle lid
- 20 color-coded metering tips
- Garden hose gun with inlet screen/filter

Requirements

Chemical Concentrate

Dilution Ratio Range – 160:1 to 6:1 @ 40 PSI

Water – Temperature – up to 160°F

Pressure – 20 - 100 PSI
Flow – 0.7 GPM @ 40 PSI
Supply Line – 1/2"

1-WAY BALL VALVE MIXING STATION



PRODUCT	CLIPPER #
1-Way Ball Valve Mixing Station High Flow Rate	VC-1060

2-WAY BALL VALVE MIXING STATION



PRODUCT	CLIPPER #
2-Way Ball Valve Mixing Station High Flow and Bottle Fill Valves	VC-1065

3-WAY BALL VALVE MIXING STATION



PRODUCT	CLIPPER #
3-Way Ball Valve Mixing Station High Flow, Low Flow & Bottle Fill Valves	VC-1070

Overview

A chemical proportioner for accurately diluting a chemical concentrate to the required ratio and for filling any sized container with diluted, ready-to-use chemical solution. This venturi injection system uses facility water pressure to draw and blend chemical concentrate into the water stream to create an accurately diluted solution. Ball valve activation allows for hands-free dispensing.

Key Features

- Eliminates manual mixing and optimizes chemical utilization, employee safety and labor efficiency
- Ball valve activation allows for hands-free dispensing
- Chemical resistant components ensure years of outstanding performance with minimal maintenance
- Industrial-strength design holds up in tough environments
- Water pressure gauge eliminates guessing, reduces set-up time and helps with troubleshooting
- Dilution ratio controlled with precision metering tips
- Dilution ratio for each valve on multi-valve stations can be set independently
- Draws chemical concentrate from any sized container

Includes:

- Stainless steel mounting bracket
- Activation ball valve(s)
- Polypropylene injector body
- Integrated brass back-flow preventer
- Easy-to-read water pressure gauge for accurate tip selection
- 20 color-coded metering tips for setting dilution ratios
- 6' chemical suction tube with strainer
- 4.5' open flow discharge tube
 - 1-way: 1 tube
 - 2-way: 2 tubes
 - 3-way: 3 tubes
- 10' blue water hose with garden hose fitting, can be cut to size
- Filter/Washer for blue water hose
- Clamp ring to attach blue hose to station
- Precise Test Strips

Requirements

Chemical Concentrate

Water

- Temperature – up to 160°F
- Pressure – 25 – 125 PSI
- Supply Line – 1/2" minimum

Flow

- High Flow (Black Injector) – 4.0-7.3 GPM
- Low Flow (White Injector) – 1.9-3.4 GPM
- Bottle Fill (Blue Injector) – 0.6-1.0 GPM

Dilution Ratio Range @ 40 PSI

- High Flow – 1,031:1 to 4.8:1
- Low Flow – 480:1 to 3.5:1
- Bottle Fill – 142:1 to 1.7:1



NOTE: Water pressure varies widely. Test strips are **highly recommended** to set up and to periodically confirm desired dilutions.

PUMP UP FOAMER PRO

1.5 Gallon

3 Gallon



PRODUCT	CLIPPER #
Pump Up Foamer Pro 1.5 Gallon	925004
Pump Up Foamer Pro 3Gallon	925005

Overview

These portable professional applicators project foam in a wide fan pattern for quick, but still precise, foam coverage. They feature a heavy-duty hose, trigger gun, and extension wand.

Key Features

- Creates rich, clinging foam that adheres to surfaces longer to maximize chemical effectiveness
- Just fill the tank with ready-to-use chemical solution, pump it up and foam
- Heavy-duty, easy-grip trigger gun with locking latch
- Wide fan pattern nozzle for fast application
- Viton/Nitrile o-rings and internal seals are compatible with wide range of cleaning chemicals

Includes:

- Heavy-duty HDPE tank with UV inhibitor
- Heavy-duty manual pump
- Viton/Nitrile seals and o-rings for commercial grade performance and life
- Pressure relief valve
- Machined foamer body
- 6' discharge hose
- Heavy-duty trigger with Viton internal seals
- Polypropylene 10" wand & stainless steel fan nozzle
- Compressed air tire valve for use with an air compressor – 3 gallon foamer

Requirements

Ready to Apply Chemical Solution
Temperature – up to 120°F

Accepts Compressed Air (3 gallon foamer)–
up to 45 PSI

IK FOAM 9 – 1.5 Gallon



PRODUCT	CLIPPER #
IK Foam 9, 1.5 Gallon	83811915

Overview

A portable foam applicator for applying foaming chemicals on to any surface as a dense and durable foam. Designed for use with chemical agents with surfactant properties (surface active).

Key Features

- Strong translucent tank with indicator level
- Funnel incorporated into the tank
- Safety valve with depressurization option
- Filter in the wand
- Base of tank can be used for hose storage
- Carrying handle and a shoulder strap
- Adjustable cone spray and jet nozzle
- Three color-coded mixer hose attachments
Orange = very wet foam
Green = very dry foam
Gray = standard foam

Includes:

- Translucent tank with level indicator
- Heavy-duty manual pump & trigger gun
- Pressure relief valve
- Machined foamer body

Requirements

Ready to Apply Chemical Solution
Pressure – up to 60 PSI

RESCUE[®]
**THE HIGHEST
STANDARD IN
DISINFECTANTS**

Effective against Parvo, Panleukopenia,
Ringworm, Influenza, Kennel Cough & more!

For more information visit
RescueDisinfectants.com





Disinfecting Accessories

Our disinfecting accessories make chemical management simpler, neater, cleaner and safer.

Each accessory is suggested for use with Accelerated Hydrogen Peroxide[®] disinfectants such as Rescue[™] Concentrate and Rescue[™] Ready to Use Disinfectants.

These convenient accessories complement our wide range of disinfecting equipment.



MANUAL DISPENSING PUMPS

EZI ACTION PUMP - 55 Gallon



Key Features

- Outputs 15 oz. per stroke
- Chemical resistant construction
- Delivers on the up and down stroke
- Constructed from FDA compliant plastics
- Fully serviceable



PRODUCT	CLIPPER #
Ezi Action Pump - 55 Gallon	P20055

DISPENSING PUMP - 5 Gallon



Key Features

- Fits standard 3/4" NPT and 2" NPT openings
- Cylinder head allows a 360° spigot orientations
- Dose up to 8 oz / 225 mL

PRODUCT	CLIPPER #
Dispensing Pump - 5 Gallon	P55P

DISPENSING PUMP - 5 Gallon



Key Features

- Fits most 5 gallon pails
- Plunger locks down – reducing height for storage
- Dispenses 1 oz



PRODUCT	CLIPPER #
Dispensing Pump - 5 Gallon	0240505

DISPENSING PUMP - 1 Gallon



Key Features

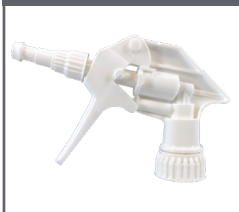
- This handy one gallon pump dispenser works with many products
- With metered settings the pump delivers either 8 mL or 16 mL of liquid with no spills, mess or measuring errors



PRODUCT	CLIPPER #
Dispensing Pump - 1 Gallon	0240501

TRIGGER SPRAYERS AND STORAGE BOTTLES

FOAMING TRIGGER SPRAYER



Key Features

- Dispenses a thick rich, clinging foam on many types of surfaces
- Terrific way to provide long-lasting foam adherence for better cleaning and disinfection



PRODUCT	CLIPPER #
Foaming Trigger Sprayer	0240003

CHEMICAL RESISTANT TRIGGER SPRAYER



Key Features

- Rated for hydrogen peroxide
- Viton 'O' ring and piston cup
- Output of 1.4 mL, is up to 40% more per stroke, reducing the number of trigger pulls needed
- 9 1/2" dip tube

PRODUCT	CLIPPER #
Chemical Resistant Trigger Sprayer	110542

TRIGGER SPRAYERS AND STORAGE BOTTLES

HEAVY DUTY TRIGGER SPRAYER



Key Features

- Patented “Comfort Grip” Design
- Up to 4x greater output per stroke, reducing the number trigger pulls needed
- Outer body protects piston assembly from damage during use and storage
- 9 1/2” dip tube

PRODUCT

Heavy Duty Trigger Sprayer

CLIPPER #

0240002

RESCUE[™] SCREEN-PRINTED BOTTLE



Key Features

- Reusable 32-oz. workplace bottle for storing diluted Rescue[™] concentrate
- Easily dispense when ready to use
- Foaming trigger sprayer included
- Use the dilution chart on bottle to keep track of the dilution rate, date diluted, and lot number



PRODUCT

Rescue[™] Screen-printed Bottle

CLIPPER #

233024

32 oz BOTTLE



Key Features

- Embossed scale encourages user to properly proportion chemicals
- Tapered neck provides a more comfortable grip when used with a trigger sprayer



PRODUCT

32 oz Bottle

CLIPPER #

0240032

MISCELLANEOUS ACCESSORIES

PRECISE[™] TEST STRIPS



Key Features

- Test the dilutions of Accelerated Hydrogen Peroxide (AHP) at a 1:16, 1:32, 1:64 and 1:128 dilution using the color block system on the label
- Provides improved accuracy for testing, allowing customers to feel confident they have reached their desired dilution.

NOTE: Water pressure varies widely. Test strips are **highly recommended** to set up and to periodically confirm desired dilutions.

METERING TIPS



For use with compact airless foamers, mixing stations and bathing system

HDPE 32 oz BOTTLE



For use with compact airless foamers, mixing stations and bathing system



FOAMER LID



For use with compact airless foamers

METERING TIP HOLDER



For use with foamer lid for compact airless foamers

BRACKET ASSEMBLY



For use with foamer lid for compact airless foamers

QUICK CONNECT



For use with compact airless foamers

GARDEN HOSE GUN



For use with compact airless foamers

SPREADER NOZZLE



For use with compact airless foamers

PRODUCT	CLIPPER #
Precise [™] Test Strips	AHP425
Metering Tips - 20 pack	443798
HDPE 32 oz Bottle	709082
Foamer Lid	709090BLU
Metering Tip Holder	491308
Bracket Assembly - Stainless Steel	709079-BA
Quick Connect - Stainless Steel	350474SS
Garden Hose Gun - inlet screen/filter	320423
Spreader Nozzle	180325
4-Hole Rinse Nozzle	VC-1016
Storage Rack	224301

4-HOLE RINSE NOZZLE



For use with Model 250 compact airless foamer

STORAGE RACK



For use with compact airless foamers

